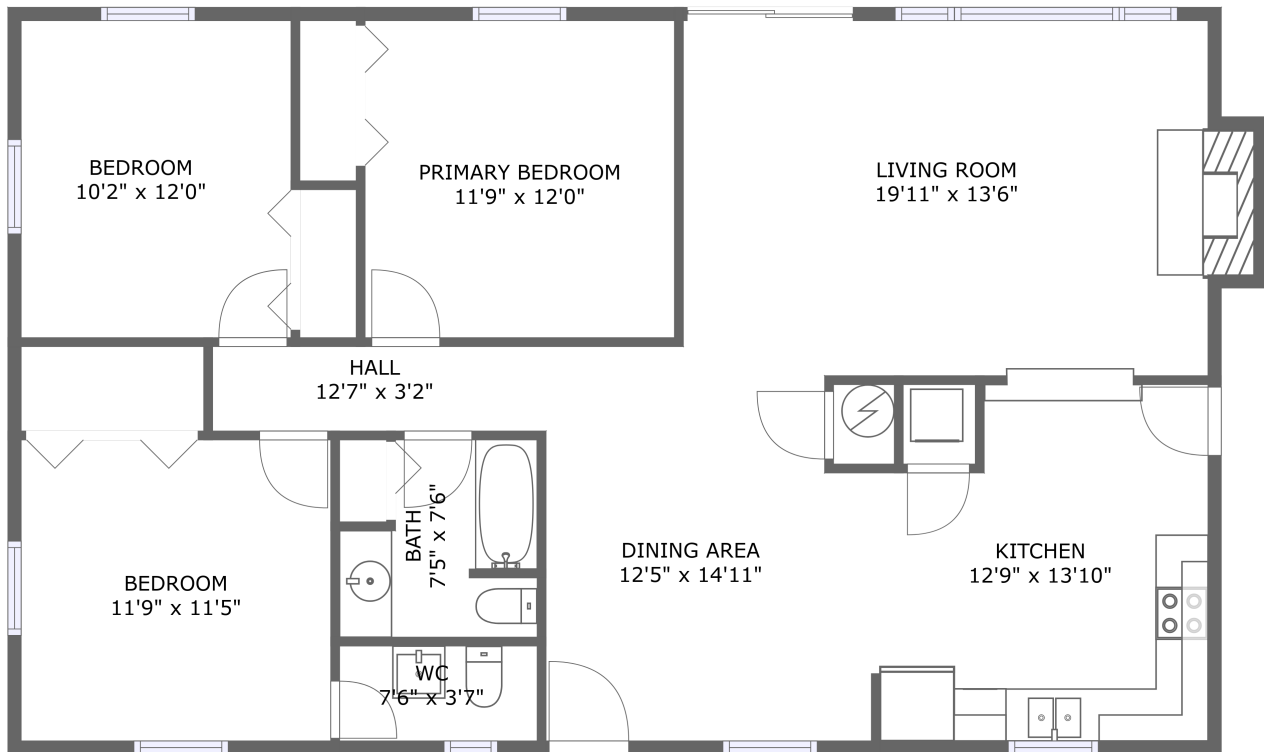


# 27049 Presquile Road, GUEST HOUSE, Easton, Maryland, United States, GUEST



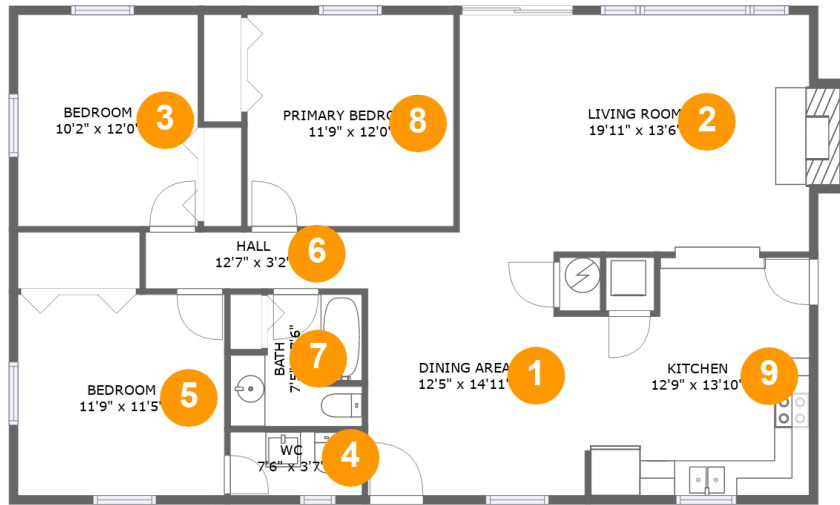
FLOOR 1

## Property Summary

 **0** garages     **3** bedrooms     **1** bathrooms     **1** half baths

 **1** floors     **1,312** Gross Living Area sqft     **1,312** total sqft

**27049 Presquile Road, GUEST HOUSE, Easton, Maryland, United States, GUEST**



**Room Dimensions**

**Floor 1**

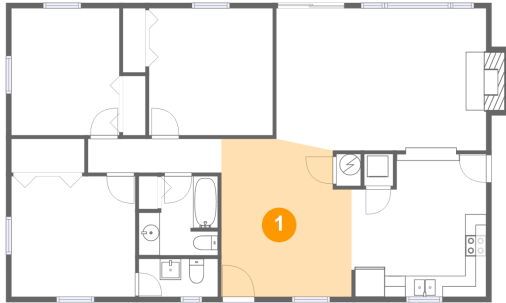
**Total sqft: 1312**

**Living area: 1312**

#	Room name	Dimensions	Area (sqft)	Counted as Living Area
1	Dining Area	12'5" x 14'11"	173 sq. ft	Yes
2	Living Room	19'11" x 13'6"	274 sq. ft	Yes
3	Bedroom	10'2" x 12'0"	123 sq. ft	Yes
4	Wc	7'6" x 3'7"	27 sq. ft	Yes
5	Bedroom	11'9" x 11'5"	134 sq. ft	Yes
6	Hall	12'7" x 3'2"	40 sq. ft	Yes
7	Bath	7'5" x 7'6"	48 sq. ft	Yes
8	Primary Bedroom	11'9" x 12'0"	141 sq. ft	Yes
9	Kitchen	12'9" x 13'10"	159 sq. ft	Yes

# 27049 Presquile Road, GUEST HOUSE, Easton, Maryland, United States, GUEST

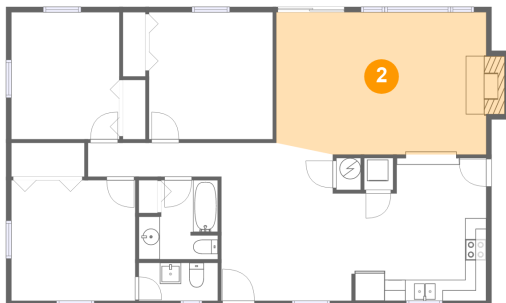
## 1 Floor 1 - Dining Area



Dimensions: 12'5" x 14'11"  
Area: 173 sq. ft  
Counted as Living Area:  
Yes

Heated: Yes  
Finished: Yes  
Enclosed: Yes  
Contiguous:  
Yes  
Permitted: Yes  
Wet Space: No  
Addition: No  
Conversion: No

## 2 Floor 1 - Living Room

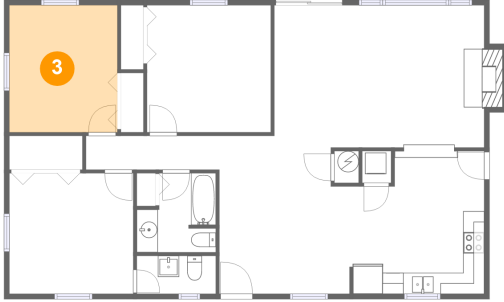


Dimensions: 19'11" x 13'6"  
Area: 274 sq. ft  
Counted as Living Area:  
Yes

Heated: Yes  
Finished: Yes  
Enclosed: Yes  
Contiguous:  
Yes  
Permitted: Yes  
Wet Space: No  
Addition: No  
Conversion: No

**27049 Presquile Road,GUEST  
HOUSE,Easton,Maryland,United States, GUEST**

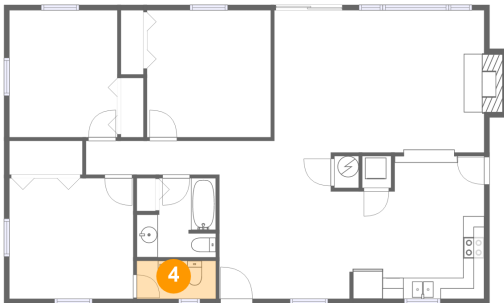
**3 Floor 1 - Bedroom**



Dimensions: 10'2" x 12'0"  
Area: 123 sq. ft  
Counted as Living Area:  
Yes

Heated: Yes  
Finished: Yes  
Enclosed: Yes  
Contiguous:  
Yes  
Permitted: Yes  
Wet Space: No  
Addition: No  
Conversion: No

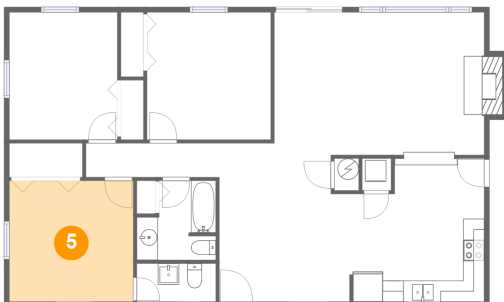
**4 Floor 1 - Wc**



Dimensions: 7'6" x 3'7"  
Area: 27 sq. ft  
Counted as Living Area:  
Yes

Heated: Yes  
Finished: Yes  
Enclosed: Yes  
Contiguous:  
Yes  
Permitted: Yes  
Wet Space: Yes  
Addition: No  
Conversion: No

**5 Floor 1 - Bedroom**

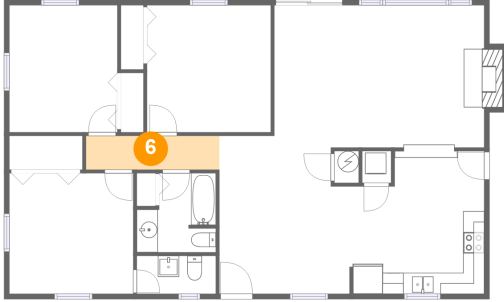


Dimensions: 11'9" x 11'5"  
Area: 134 sq. ft  
Counted as Living Area:  
Yes

Heated: Yes  
Finished: Yes  
Enclosed: Yes  
Contiguous:  
Yes  
Permitted: Yes  
Wet Space: No  
Addition: No  
Conversion: No

**27049 Presquile Road, GUEST**  
**HOUSE, Easton, Maryland, United States, GUEST**

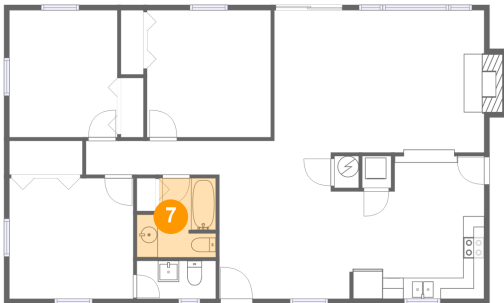
**6 Floor 1 - Hall**



Dimensions: 12'7" x 3'2"  
Area: 40 sq. ft  
Counted as Living Area:  
Yes

Heated: Yes  
Finished: Yes  
Enclosed: Yes  
Contiguous:  
Yes  
Permitted: Yes  
Wet Space: No  
Addition: No  
Conversion: No

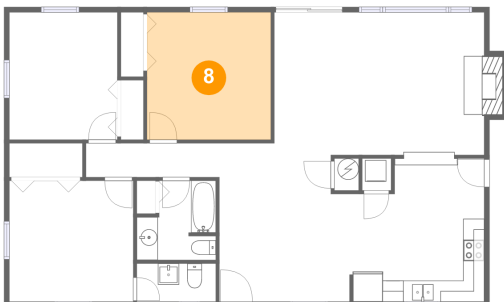
**7 Floor 1 - Bath**



Dimensions: 7'5" x 7'6"  
Area: 48 sq. ft  
Counted as Living Area:  
Yes

Heated: Yes  
Finished: Yes  
Enclosed: Yes  
Contiguous:  
Yes  
Permitted: Yes  
Wet Space: Yes  
Addition: No  
Conversion: No

**8 Floor 1 - Primary Bedroom**



Dimensions: 11'9" x 12'0"  
Area: 141 sq. ft  
Counted as Living Area:  
Yes

Heated: Yes  
Finished: Yes  
Enclosed: Yes  
Contiguous:  
Yes  
Permitted: Yes  
Wet Space: No  
Addition: No  
Conversion: No

**27049 Presquile Road,GUEST**  
**HOUSE,Easton,Maryland,United States, GUEST**

**9 Floor 1 - Kitchen**



Dimensions: 12'9" x 13'10"  
Area: 159 sq. ft  
Counted as Living Area:  
Yes

Heated: Yes  
Finished: Yes  
Enclosed: Yes  
Contiguous:  
Yes  
Permitted: Yes  
Wet Space: No  
Addition: No  
Conversion: No